



Kabil Integrated Industrial Estate

Batam - Indonesia

*Exclusively created to support Oil & Gas,
Renewable Energy, Mining Related Industry*

Developed & managed by :



PT KABIL CITRANUSA
PT KABIL INDONUSA ESTATE

<https://kabilindustrial.com/>

BATAM STRATEGIC LOCATION

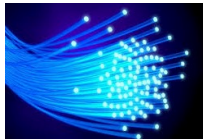
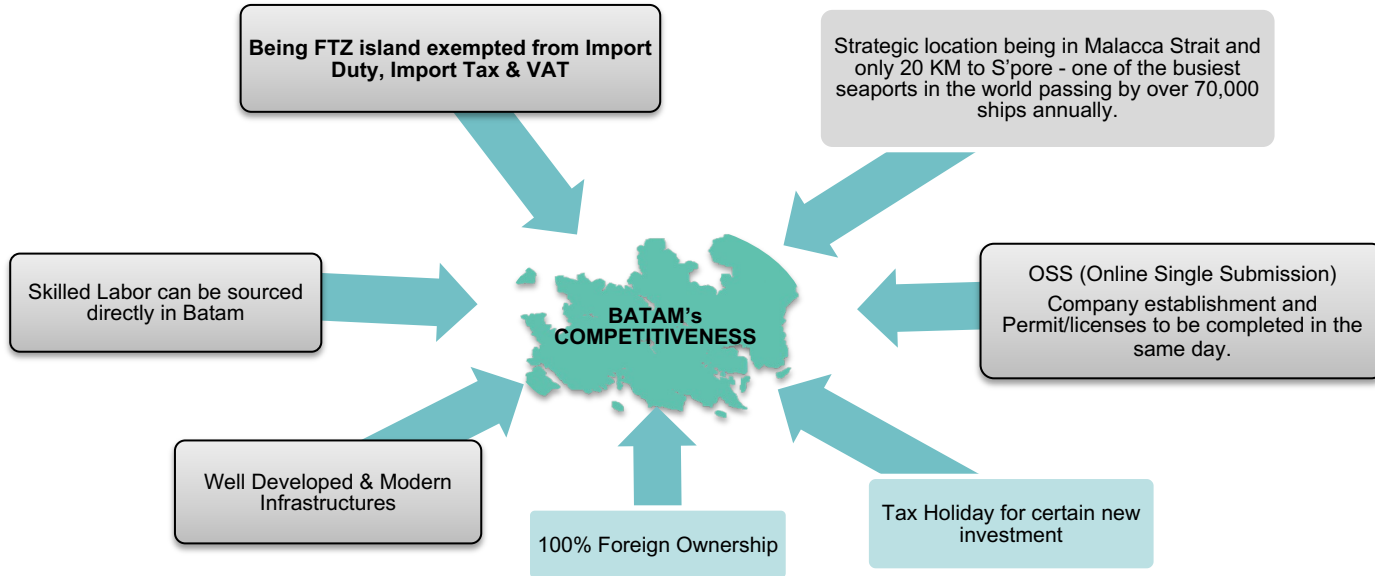


Batam / Kepulauan Riau is strategically located in Malacca Strait, connecting the international shipping route between the Indian and Pacific Oceans.

Lies only 20 kilometers to the southeast of Singapore, which has one of the busiest seaports in the world, passing by over 150,000 ships annually.

Batam is within easy reach of the ferry terminals and airport. Traveling from Singapore to Batam is a convenient 40-60 minutes ferry ride, and Batam's Hang Nadim Airport with 50 daily flights from/to main cities in Indonesia and an international flight to Kuala Lumpur.

BATAM'S UNIQUE COMPETITIVE EDGE



Infrastructures : Telecommunication



Power Plants



Road Network



International Ports



Industrial Estate



International Airport

ONE STOP SERVICES IN KIIE

KIIE is gazetted as one of the NATIONAL VITAL OBJECT in Indonesia.

KIIE offers “One Stop Services” to investor covering:



Corporate or legal service, incl. License / Permit applications

"In-house engineering team to assist new investors in the preparation of Feasibility Studies, Budget Plans, and as local consultants."

Human resources planning and recruitment

Accommodation for Top Management and housing / dormitories for staff & workers

Worker's Facilities, such as Football Stadium, Mosque, Church, etc

International Public Port within the industrial estate

Integrated logistics services with 1-roof CIQP / Custom, Immigration, Quarantine and Port clearance

SITEPLAN OF KABIL INTEGRATED INDUSTRIAL ESTATE

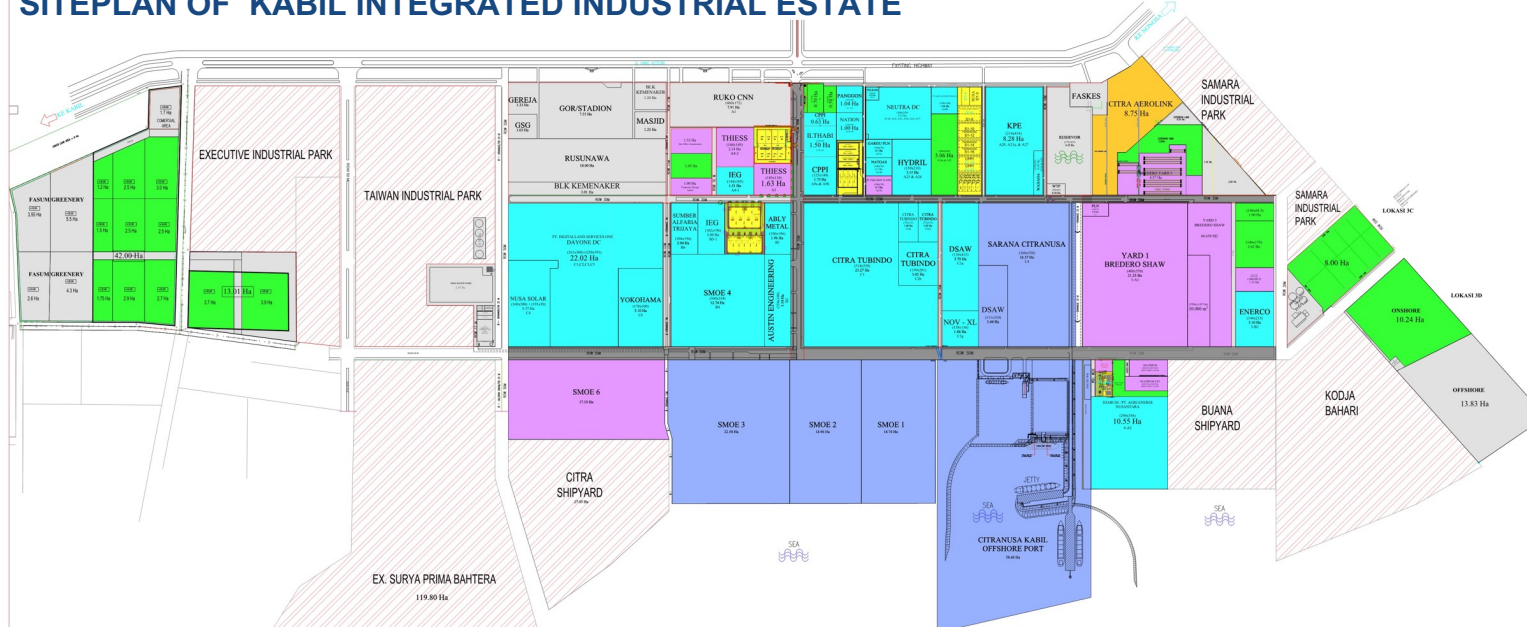


Spanning over 538 Ha of prime waterfront land, KIIE is focusing more on Oil & Gas, Renewal Energy, Mining related industry with the full support of the International Cargo Port within the Industrial Estate.

With 45 tenants occupying 381 Ha land plot, available land for sale or lease 60 Ha.

KIIE is gazetted by Indonesia Government as one of the NATIONAL VITAL OBJECT of Indonesia.

SITEPLAN OF KABIL INTEGRATED INDUSTRIAL ESTATE



 Land Sold	= 132,23 Ha
 Land Leased	= 71,04 Ha
 Completed and Occupied Warehouse / Workshop Facilities	= 11 Ha
 Ongoing Aerolink Project	= 8 Ha
 Completed Infrastructure and Public Facilities	= 102,33 Ha
 Infrastructure & Public Facilities to Be Developed	= 21,91 Ha
 Land Available for Sale or Lease	= 60,34 Ha
 Managed by KIIE	= 130,7 Ha
	537,55 Ha

FACILITIES & INFRASTRUCTURE

International Public Port

Located within the estate, act as the main gateway for imports of raw materials, capital goods and exports of finished goods from / to all over the world.

With in-house CIQP facilities to enable fast clearance of shipping/cargo documents.



Road and Drainage

Main Road : ROW 30m & 50m
Secondary Road :ROW 16m & 12m .
With drainage system, streets lightings, cctv & pedestrian, garden.

Telecommunication

Cooperating with Telkom and independent internet providers using FO connection through subsea cable landed in Tj Memban (5km away) connecting to Jakarta, Spore, Malaysia, Hongkong and all the way to US West Coast.



Water Supply

Daily production u/t 5,200 m3 industry water from owned WTP from 6 ha water reservoir. Besides the water supply from BP Batam.

Electricity

Cooperating with PLN, to provide redundant power, supplied from 2 power sources:

- GIS 150kV connected to island-wide power plant.
- 2 Independent power plant of 30MW & 50MW within the estate.



Gas

Supplied by the State Gas Company (PGN) via the Grissik-Batam-Singapore pipe-line.

FACILITIES & INFRASTRUCTURE



Power Plant within the estate
(co-operation with PLN Batam,
a state owned company)

Within the estate PLN Batam currently operating 80 MW Power Plant and 150 KV Gas Insulated Switchgear (GIS) aligned with the current 682 MW island-wide electricity network.

Green Energy

Planned 20MW solar-pv to be generated from 6 ha water reservoir & warehouse rooftop.

FACILITIES & INFRASTRUCTURE



Industrial Water

The Estate has 2 water resources:

- From BP Batam pipeline u/t 2,200 m³/day.
- KIIE's own 6 Ha - water reservoir with current capacity of supplying u/t 5,200 m³ treated water daily.

Reservoir Capacity

Up to 400.000 m³

Water pressure

Up to 3 bars

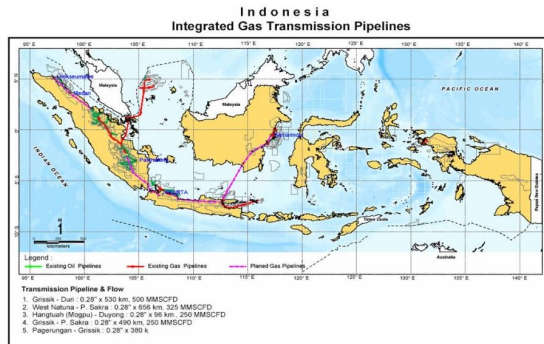
Production capacity

Up to 5,200 m³/day

Piping

6" – 10" for main pipe within the estate
3" connecting to tenants

FACILITIES & INFRASTRUCTURE



Gas Pipe Line

Gas supplied by the Government through PGN using the Grissik-Batam-Singapore transmission pipeline, carrying gas from the ConocoPhillips & PetroChina field to Batam with volumes in excess of 800 MMScfd (Million Standard Cubic Feet per Day) or 22.6 million m³/day transmitted through its 5,900 km long transmission and distribution pipeline network.

Gas pressure

10 bars

Gas Energy

10 BBtuD

Piping

12" via main road

6" within the estate

FACILITIES & INFRASTRUCTURE



GATE WITH OPTIMUM SAFEGUARDS & FENCING AROUND THE ESTATE



HOSPITAL FACILITIES WITH 90 BEDS, RADIOLOGI SERVICES & EMERGENCY UNIT



ESTATE FIRE FIGHTER UNIT



24H SECURITY & CCTV SYSTEM



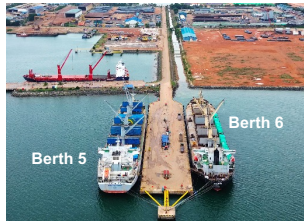
CITRANUSA KABIL INTERNATIONAL CARGO PORT (located within the industrial estate)

PORT INFORMATION :

- Berth 1 (length 130 m) : for Tug & barges up to 2,000 DWT with water draft up to 5m LWS
- Berth 2 (ro-ro ramp) : for RoRo operation with Landing Craft /LCT, water draft up to 5m LWS
- Berth 3 (length 176 m) : for berthing of Vessel up to 30.000 DWT with water draft up to 10m LWS.
- Berth 4 : for liquid cargo
- Berth 5 & 6 (@ length 277.5 m) : for berthing of Vessel up to 40.000 DWT with water draft up to 12.5m LWS

PUBLIC PORT FACILITY WITH 6 JETTY

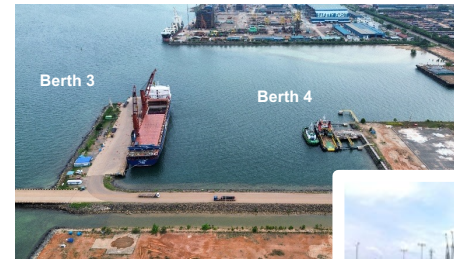
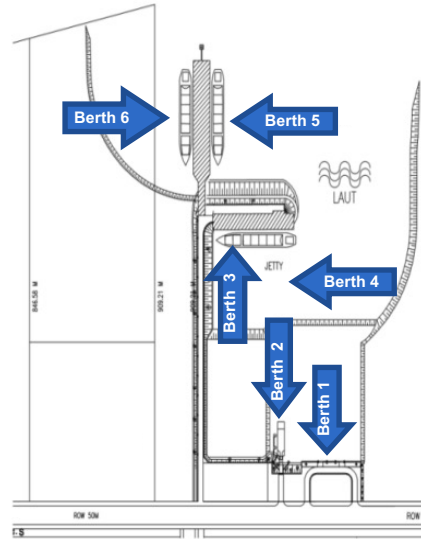
- CITRANUSA KABIL PORT is one of the 3 Free Trade Ports designated by the Government in Batam.
- Located within KITK, it functions as the main gateway for the import of raw materials, capital goods, and the export of finished goods.
- With ISPS Code, it can serve international routes with ships sailing directly to/from Kabil - Overseas.
- Familiar with AQIS / Australian Quarantine & Inspection Services.



Berth 5 & 6 (@ length 277.5 m) - for berthing of Vessel up to 50.000 DWT with water draft up to 12.5m LWS



Berth 2 (roro ramp) - for RoRo operation with Landing Craft /LCT, water draft up to 5m LWS



Berth 3 (length 176 m) - for berthing of Vessel up to 30.000 DWT with water draft up to 10m LWS.



Berth 4 (liquid jetty) - for liquid cargo



Berth 1 (length 130 m) - for Tug & barges up to 2,000 DWT with water draft up to 5m LWS

SUPPORTING FACILITIES

COMMUNITY FACILITIES FOR WORKERS AND LOCAL COMMUNITY USAGE



Central Mosque to accommodate u/t 1,000 pax



Multi Purpose Hall



Church to accommodate u/t 2,000 pax

COMMERCIAL AREA

Consist of 362 Shop houses for SME / Small Medium Enterprises, Provision Shops, Canteen/Eateries, Banking facilities : BNI'46, Bank Mandiri, restaurant, food court, etc.



SUPPORTING FACILITIES



Dormitory

- In co-operation with the Government BPJS we built workers dormitories located within the industrial estate.
- 10 blocks twin tower to accommodate u/t 4,000 workers, complete with provision shop, canteen, prayer room.
- With expansion plan of another 4 blocks to accommodate additional 1,600 workers.
- Rental price ranging from USD13-USD16/person/month, 4 person in a room.

Training Center

Job Training Center (BLK) was inaugurated by the Ministry of Manpower of the Republic of Indonesia in Kabil Integrated Industrial Estate on Wednesday, July 10, 2024.

The construction of the Batam BLK building is expected to provide a solution for job seekers and workers to improve or learn skills in line with industry needs. It aims to enhance the quality of competent and competitive human resources, enabling them to compete in the job market.

Sport Stadion

- Capacity = 2.000 persons
- 100 seats for VIP
- International Football Field
- 8 running tracks with international standard



SUPPORTING FACILITIES FOR EXPATRIATES & MANAGERIAL STAFF

Just a 10 minutes drive from Kabil Industrial Estate, our **Nongsa Resorts** provides:



Marina with 65 floating pontoon berth, able to accommodate yacht up to 120ft long, 150 villas for sale and lease, 29 hotel rooms



9- hole Golf Course
1st Asian Jack Nicklaus designed course



Nongsapura Ferry Terminal

International Ferry terminal, to connect Nongsa, Batam – Tanah Merah, Singapore.
Closest proximity between Batam and Singapore (only 40 minutes), with 10 – 15 return trips per day



143 room resort hotel with meeting room facilities



100 sea facing villas for sale and lease



130 unit apartment hotel and 50 unit villa in exotic resort styles well as retails

The Scene / Movie Town

SEATRIUM



BREDERO SHAW



CITRA TUBINDO



YOKOHAMA



CORE TENANTS

IN KABIL INTEGRATED INDUSTRIAL ESTATE

AUSTIN ENGINEERING



DSA W



CTE



ENERCO



DSAW

<https://www.ptdsaw.co.id>



PT DWI SUMBER ARCA WAJA was established in 1995 to manufacture large diameter steel pipes and structural tubulars.

Customer requirements, industry standards and established procedures form the basis for our Quality Assurance program, which is certified by ISO 9001 & licensed to manufacture API 2B & 5L.



Manufacturers of Large Steel Pipes
And Structural Tubulars



ISO 9001 : 2008

CITRA TUBINDO ENGINEERING

<https://www.cte.co.id>



PT CITRA TUBINDO ENGINEERING objective is to provide our clients a top quality service & product, on time & within budget, by experience service technicians/engineers who have spent almost all their working life covering the oilfield fabrication, drilling & service industry.



PT Citra Tubindo Engineering was formed in 2007. Our key areas are Fabrication Works for the Oil & Gas industry, including Petrol & Chemical industries where off-site modular fabrication works are required. Our other complimentary area of works are for the Conversion/Modification & Refurbishment of small to medium size land and offshore rigs, targeted to the oil & gas industries.

Seatrium

<https://www.seatrium.com>



At Seatrium, offshore platforms and FPSOs are our business. As an industry leader, we serve worldwide oil and gas clients by providing services in engineering, procurement, construction, transportation, installation and commissioning. Each and every project undertaken is executed to the Seatrium commitment of Safety, Quality and Timely Delivery.

scope

Fabrication

project structure

HVDC Substation
Capacity – 1,320MW
Topside – 11,023mt
Jacket – 4,539mt (8 legged)

project duration

On-going

location

Central North Sea, UK

salient point

At 220km distance to landfall and capacity of 1,320MW, it will power nearly 1.2million UK homes with clean and renewable energy. Sofia will be one of the largest wind farms in the world once completed.

RWE Renewables

SOFIA HVDC DOGGER BANK

scope

Fabrication

project structure

Foundation
Weight – 1,630 mt
Unit – 15 foundations
Total – 24,450mt

project duration

July 2019 – Jan 2022

location

70km off Port of Taichung, Taiwan Strait
Jan De Nul, Belgium

FORMOSA 2 WIND FARM

scope

Fabrication

project structure

Capacity – 1,400MW (HVAC)
Reactive Compensation (RCS)
Topside – 2,347mt (Structural)
Jacket – 1,500mt (4 legged)
Piles – 814mt
Offshore Substation (OSS)
Topside – 8,340mt (Structural)
Jacket – 4,840mt (6 legged)
Piles – 1,952mt

project duration

Oct 2018 – Aug 2020

location

Southern North Sea, UK
Ørsted, UK

HORNSEA 2 WIND FARM

2011
GAJAH BARU FIELD DEVELOPMENT
 Gajah Baru Field, Indonesia

2009
TUNU NORTH PROJECT PHASE 11
 Tunu Field, Indonesia

2007
BOHAI FIELD DEVELOPMENT PHASE II
 Bohai Bay, China

2006
KERISI FIELD DEVELOPMENT
 Kerisi Field, Indonesia


BREDERO SHAW INDONESIA

<https://www.brederoshaw.com>



Bredero Shaw is the global leader in pipe coating solutions. With more than 80 years of experience, the largest team of dedicated pipe coating professionals, the most extensive network of strategically located plants worldwide and with proven innovative coating technologies, the company has protected more pipelines in virtually every environment and operating condition than anyone in the industry.

BREDERO SHAW INDONESIA

<https://www.brederoshaw.com>



Past Projects:

Inpex GEP, 72,000 x 42" pipes

- Coated pipe weights from 16 tonne to 22 tonne.

Chevron Wheatstone, 19,000 x 44" pipes

- Coated pipe weights from 16 tonne to 25 tonne.



Ongoing Project

- **SCARBOROUGH GEP
Woodside**

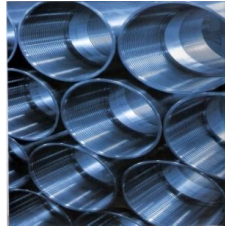
Pipe OD : 32"/38"
Total Km : 432
Load in MT : 291,757
Load out MT : 433,017
Coating time : Q4'22 to Q4'23

- **PIPE TO SHORE
Darwin DPDP**

Pipe OD : 26"/34"
Total Km : 126
Load in MT : 53,515
Load out MT : 108,000
Coating time : Q1'23 to Q3'23

PT CITRA TUBINDO Tbk

<https://www.citratubindo.com>



PT Citra Tubindo Tbk was established in 1983 to provide heat treatment and end finishing of OCTG (oil country tubular goods) for the oil and gas industry in Indonesia and the world. The plant started production in June 1984 as a pioneering enterprise on the island of Batam, situated just 20km south of Singapore and has now become the logistics centre for the oil service industry in all of Indonesia. Both Citra Tubindo's strategic location, coupled with having a deep water port located in the industrial estate, allows for the efficient global export of its products.

Today, PT Citra Tubindo is a world class manufacturer and service provider for oilfield tubular goods. Over 70% of its products are shipped to major multinational oil companies as well as state oil companies located around the world. It specialises in high performance proprietary pipe and premium thread connections for use in ever demanding well environments.

Solar Cell

PT NUSA SOLAR INDONESIA is a solar photovoltaic technology company focusing on leading technology, research and development and high-end product manufacturing.

Total planned capacity of this project is 3.5 GW N-Type solar cell with production lines apply most advanced technology, 100% Automatic AGV delivery for all process. Online AOI supervision and inspection.



solar cell



solar cell



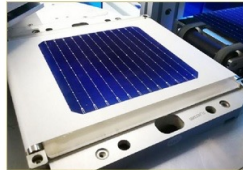
solar cell



solar cell



solar cell



solar cell



YOKOHAMA

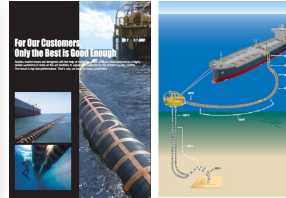
<https://www.y-yokohama.com>



供出: 八幡製鋼所株式会社(株)の提供



Company Name	PT. Yokohama Industrial Products Manufacturing Indonesia (ヨコハマ工業品製造インドネシア株式会社)		
Established	April 2014	Start Prod	2015 second term
Plant construction site	Riau Islands Province Batam City Kabil industrial - Republic of Indonesia		
Main Production	Marine hose, pneumatic fenders		
Total investment	38 million USD (first term)	Investment	12.5 MillionUSD
Land area	5.1万㎡		



Special large-diameter high-pressure rubber hose that is used when transferring oil across the tanker to storage facilities on the sea.

Pneumatic Fender. The buffer material that is used to prevent damage to the hull and the quay when ships lie at anchor.

Supporting Industry for Mining Sector

austinengineering
indonesia

- PT Austin Engineering Indonesia specializes in the manufacture of mining attachment products
- i.e Dump truck bodies, Excavator buckets, tyre handlers, water tankers etc



- Major customers are Indonesian Mining Contractors and Owner Miners
- Products are shipped to Kalimantan and other Indonesian mining regions
- Opportunity to export products to Australia, Africa, Mongolian and other major mining countries



Supporting Industry for Mining Sector

THIESS Rebuild Center for Mining Truck

Thiess has an extensive fleet of mining haulage trucks in Indonesia and Australia, including more than 650 that will reach the end of their service life in the next eight years and require either replacement or rebuilding.

Thiess Group Executive Chair and CEO Michael Wright said: “The new truck rebuild facility at Kabil Estate is an integral part of a strategic initiative to equip Thiess with better control over our asset replacement and rebuild program, and deliver improved financial and sustainability outcomes for our clients and shareholders





PT Vector Engineering Indonesia



Vector Services

Engineering

Vector Utama Indonesia has a full staff of Structural, Civil, Mechanical, Corrosion and Industrial Engineers to help with all of your analysis and design needs. As most of Vector's projects are design build, we can provide significant time and cost savings for our clients. We are also heavily involved with 3D scanning and modelling for structures and mechanical equipment.

Multidisciplinary Expertise

For many years, our company has been at the forefront of structural engineering, navigating the complexities of construction with finesse and innovation. Our multidisciplinary team of engineers, designers and consultants collaborates seamlessly to deliver solutions that marry form with function, ensuring structural integrity without compromising architectural vision.



PT Callidus Process Solutions

Callidus has been providing total high-end flow control solutions to the oil & gas, mining, and renewable energy industries since 1997.

Callidus has been providing total high-end flow control solutions to the oil & gas, mining, and renewable energy industries since 1997. We currently hold a diverse portfolio of projects attributed to our broad service range.

Innovative valve management and world-class engineering solutions.

That is Callidus Group.



Process Solutions

We specialise in the repair, maintenance, management, servicing and diagnostics of valves, actuators, and instrumentation.



Welding Solutions

Delivering engineering solutions tailored to client specific erosion and corrosion challenges.

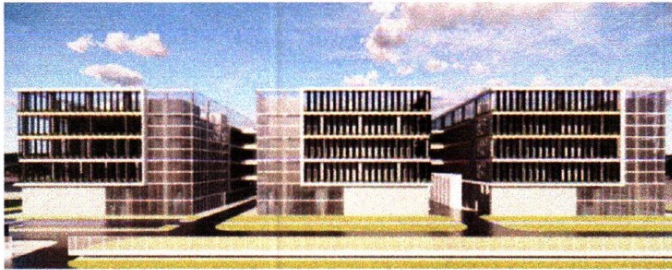


Singtel and Telkom Indonesia break ground on data center in Batam

51MW facility to be operated by Telkom's NeutraDC unit

SUPPORTING INDUSTRY FOR
DATA CENTER

Adapun gambaran umum desain data center Batam sebagai berikut:



- Located in Kabil Integrated Industrial Estate Batam, Indonesia
- 3 DC campus (17MW each)
- 51MW IT load in total
- Design PUE < 1.35
- At least 2 access roads for entry to DC
- Around 7.7. km to BSCS-1 Subsea Cable Landing Point
- Around 14 meters ASML
- Around 2km to airport. No direct flight paths above DC
- Less than 8km for key emergency services
- Planned Ready For Service Q2 2024
- 4 levels purpose-built data center
- Up to 8 layers of security
- Carrier neutral

Batam Data Center Certification

- Planned UTI Design Tier III
- Planned UTI Constructed Tier III
- Planned ISO/IEC 27001 Information Security Management System
- Planned ISO 14001 Environmental Management System
- Planned ISO 50001 Energy Management System
- Planned PCI DSS
- Planned SOC 1 Type 2/ SOC 1 Type 2
- Planned SSAE-16/ SSAE-18
- Planned Threat, Vulnerability and Risk Assessment (TVRA)



Gambar 1. Drawing



WWTP, RWTP, WTP

Infrastructure
5.44 Ha Land

DC Dayone
22 ha



Thank You

Contact Us

Citranusa Niaga Commercial Centre - Block A2 No. 1

Jl. Hang Kesturi KM. 4, Kabil - Batam 29467 – Indonesia

- Contact person : Rizki Aditya Nugraha
- Website : <https://kabilindustrial.com/>
- Email : marketing@kcn.co.id

